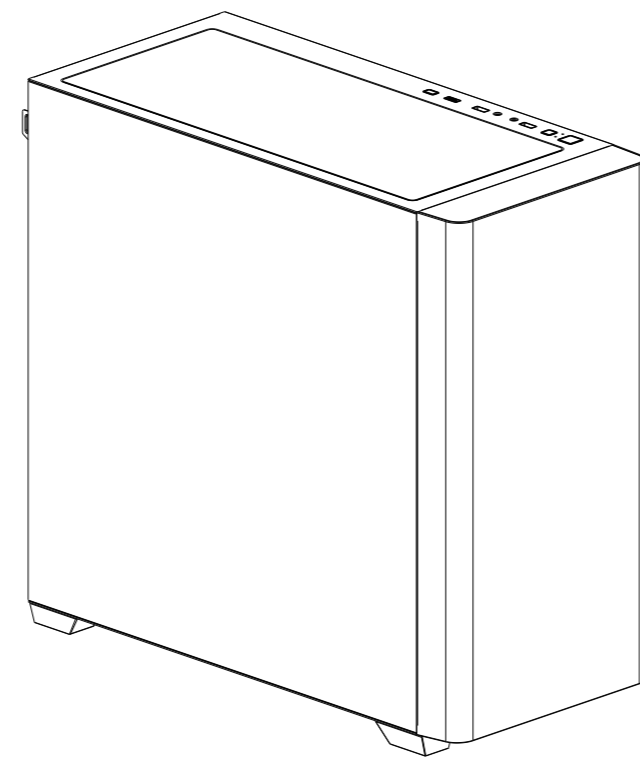
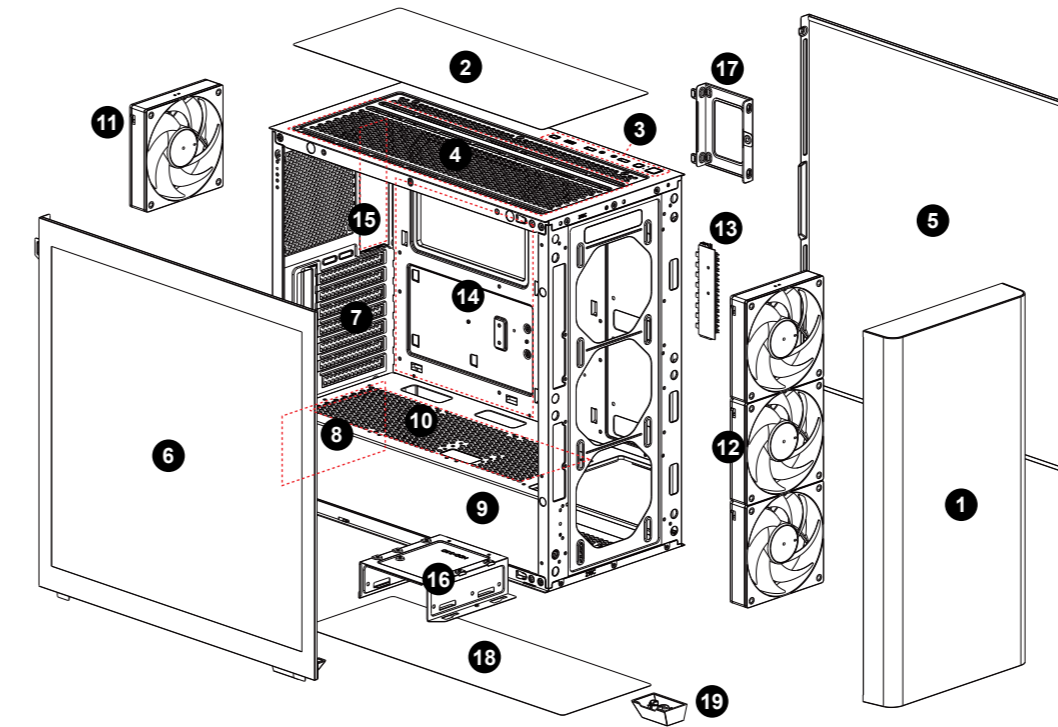


ATHENA M3

MID-Tower PC Case

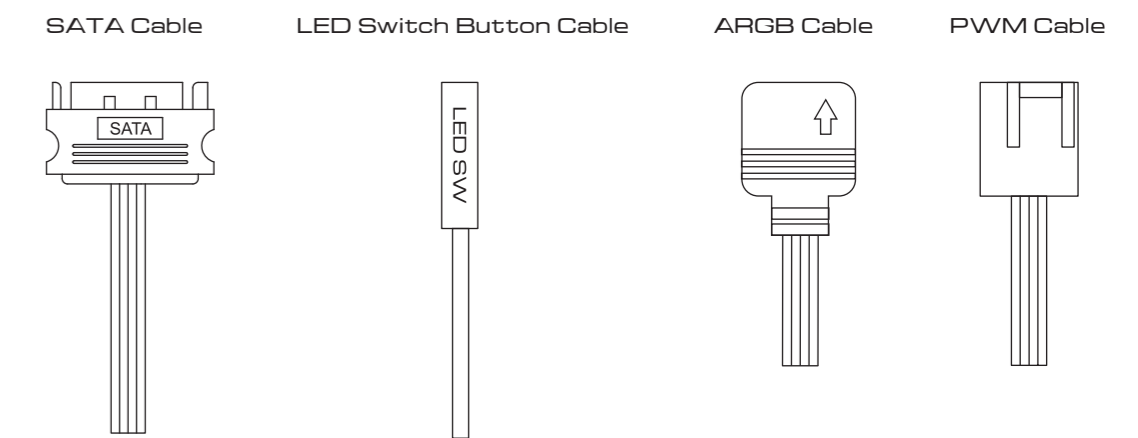
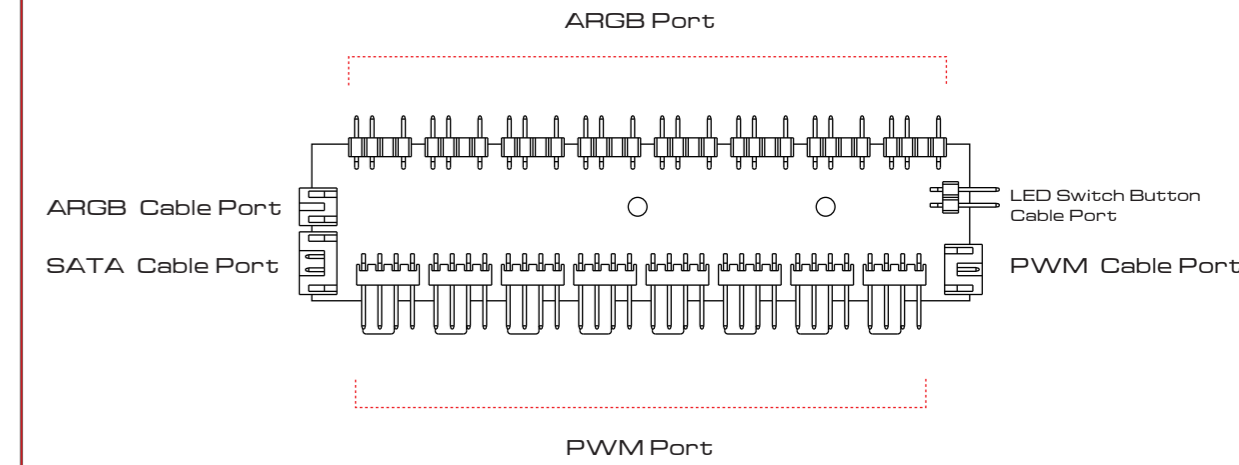


▼ Case Layout and Parts Identification



- | | |
|--------------------------------------|---------------------------------|
| 1. Front Panel | 11. Rear Fan |
| 2. Top Magnetic Dust Filter | 12. Front Fans |
| 3. IO Port Module | 13. Fan Hub |
| 4. Top Radiator (Fan) Mounting Holes | 14. Motherboard Placement |
| 5. Right Side Panel | 15. Motherboard Mounting Holes |
| 6. Left Side Tempered Glass | 16. HDD / SSD Cage |
| 7. PCIe Slots | 17. SSD Cage |
| 8. Power Supply Unit Mounting Hole | 18. Bottom Magnetic Dust Filter |
| 9. Power Shroud | 19. Chassis Pedestals |
| 10. Power Shroud Fan Mounting Hole | |

▼ Fan Hub



▼ Safety Information

- General Safety Warnings**
Always ensure the computer case is placed on a stable, flat surface to prevent it from tipping over. Keep the case away from water, moisture, or high humidity environments to avoid electrical hazards. Do not block or obstruct the ventilation openings to ensure proper airflow and prevent overheating.
- Electrical Safety**
Disconnect the power supply before installing or modifying any internal components. Avoid touching internal components directly; always ground yourself to prevent static discharge, which can damage sensitive components. Use only compatible power supplies and cables, ensuring that all connections are secure and free from fraying or damage.
- Handling Precautions**
Handle the computer case with care during transportation to prevent physical damage. Use appropriate tools when assembling or disassembling components inside the case to avoid injury. Do not force components into place; ensure they align properly before securing them.
- Fire Hazard Warnings**
Ensure all components are properly ventilated and not overheating, as this can be a potential fire hazard. Avoid overloading electrical circuits connected to the computer case to prevent overheating and potential fire risks. Keep flammable materials away from the computer case.
- Child Safety**
Keep the computer case and its components out of reach of children. Do not allow children to play with or operate the computer case, especially when it is powered on.
- Cleaning and Maintenance**
Unplug the computer case from the power source before cleaning. Use a dry, soft cloth for cleaning the exterior of the case. Do not use liquid cleaners or aerosols. Periodically check and clean the ventilation openings to ensure proper airflow.
- Installation Safety**
Ensure that all components are installed correctly and securely before powering on the system. Double-check connections and screws to prevent potential hazards during operation. Follow the manufacturer's guidelines for component installation and ensure compatibility with the case.
- Disposal Instructions**
Dispose of the computer case and its components according to local electronic waste regulations.

▼ Package Contents

- Gaming Case : ATHENA M3
- Chassis Protection : EPS Protection Foam
- Chassis Dust Cover
- Preinstalled Fans : GAMDIAS NOTUS Fans x 4
- Accessory Box : Screws and Standoffs

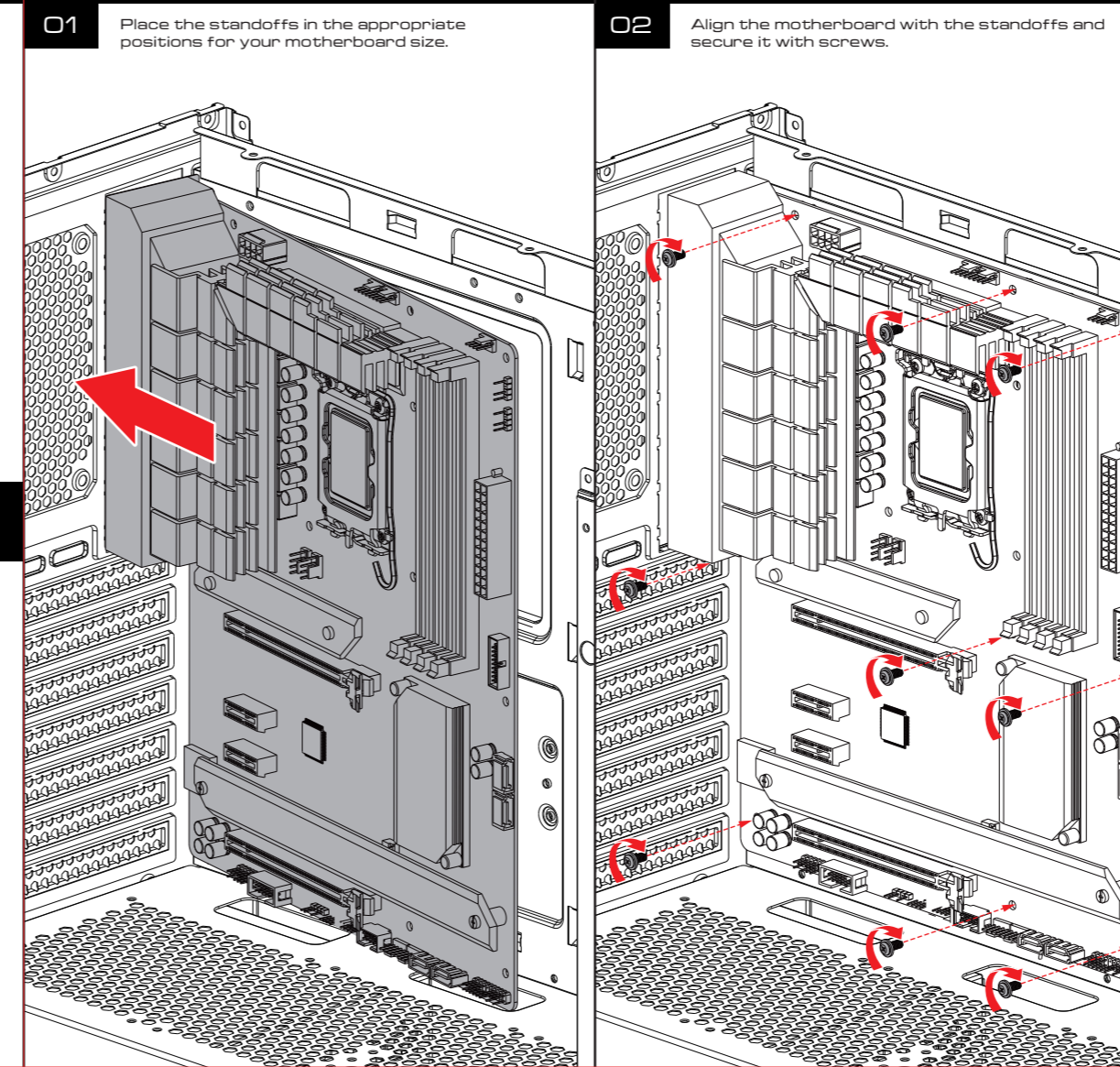
A. Motherboard / SSD screws	
B. Motherboard additional standoffs	
C. PSU / GPU PCIe screws	
D. HDD cage screws	
- Accessory Box : Cable Ties

E. Cable ties	
---------------	--

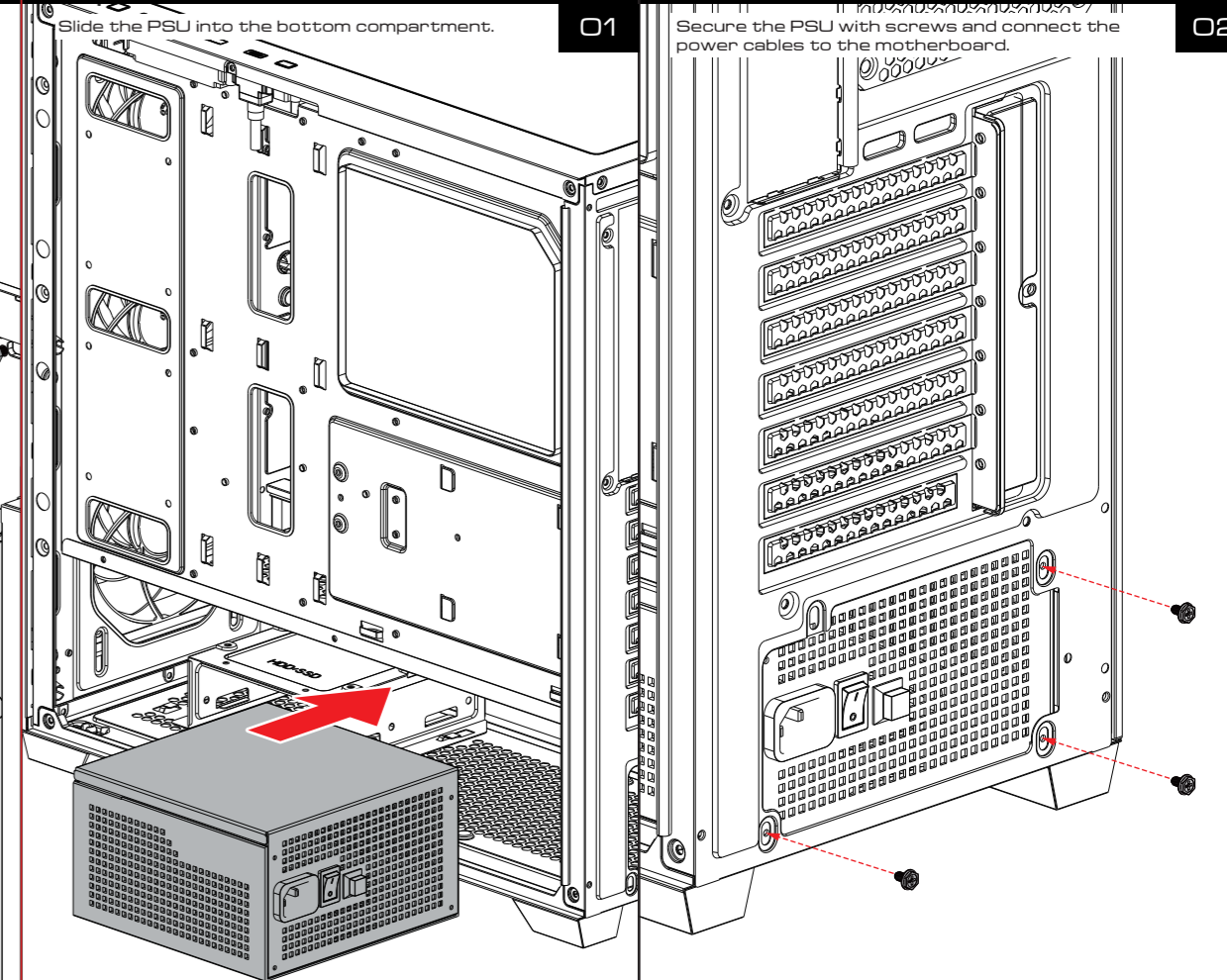
▼ Specification

- Case Type: MID Tower
- Motherboard Support: E-ATX, ATX, Micro-ATX, Mini-ITX
- Expansion Slots: 7
- Material: SPCC, ABS, Tempered Glass
- Product Dimension : 460 x 218 x 450 mm(18.1 x 8.6 x 17.7 inch)
- Chassis Dimension : 430 x 218 x 430 mm(16.9 x 8.6 x 16.9 inch)
- Radiator Support : Top: 360 mm · Front: 360mm · Rear:120 mm
- Fan Support : Top: 3 x 120mm , 2 x 140mm · Front : 3 x 120 mm · Rear: 1x 120mm
- Motherboard Sync : 5V 3-Pin Addressable Header
- Drive Bays : 2 x 3.5" or 1 x 2.5"+1 x 3.5"(HDD Cage) · 4 x 2.5"
- Clearance : CPU cooler height limitation: 170mm · VGA length limitation: 420mm · PSU length limitation: 200mm

▼ Motherboard Installation

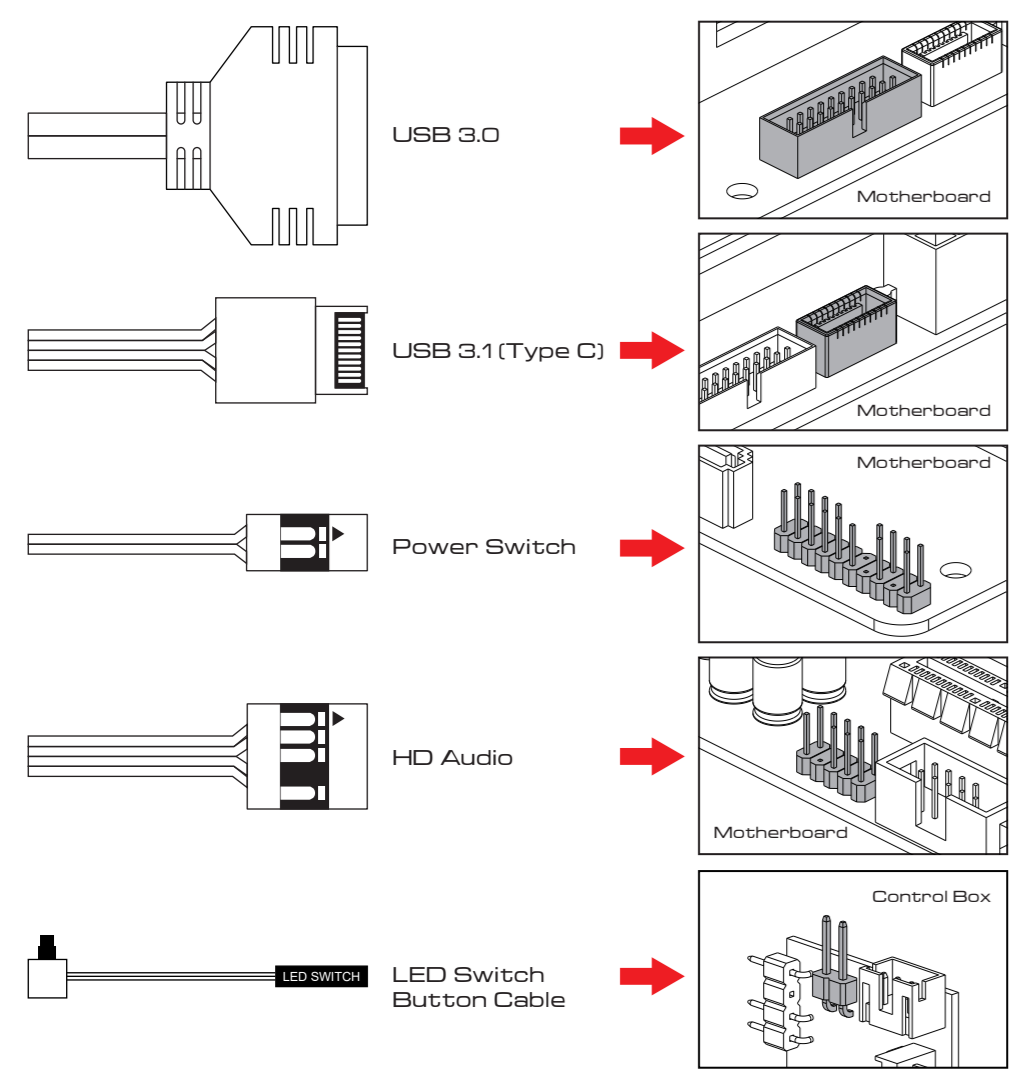


▼ Power Supply Unit (PSU) Installation

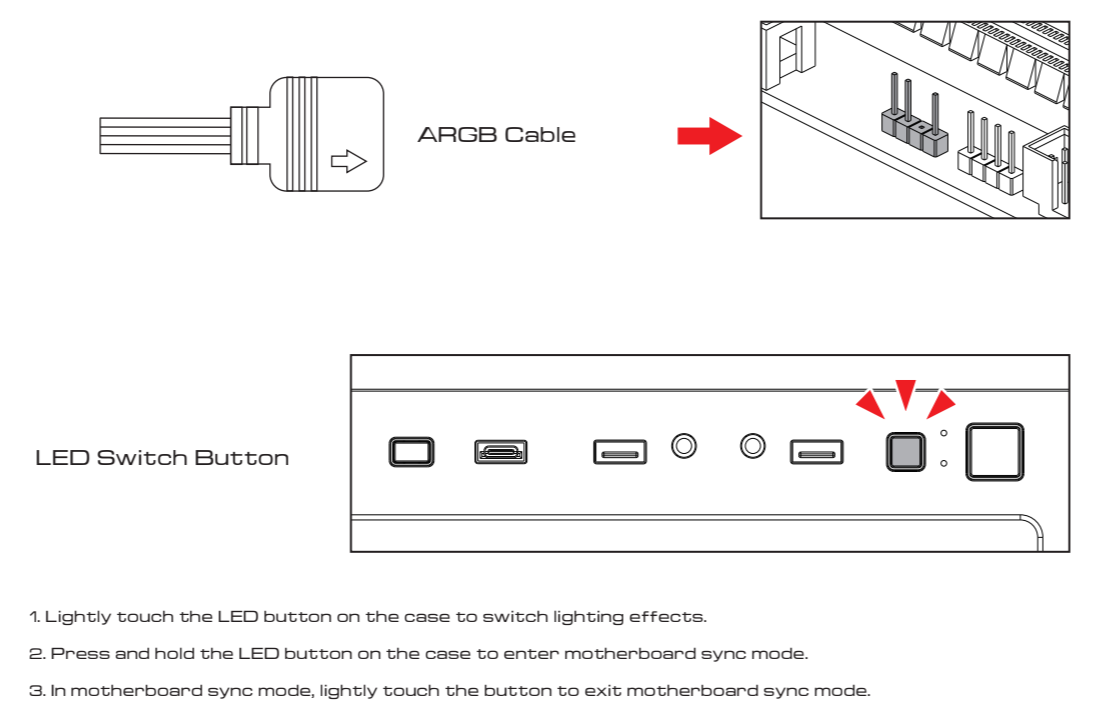


▼ Front I/O cables

Ensure compatibility of all non-power connectors, RGB, USB, and fan controls.

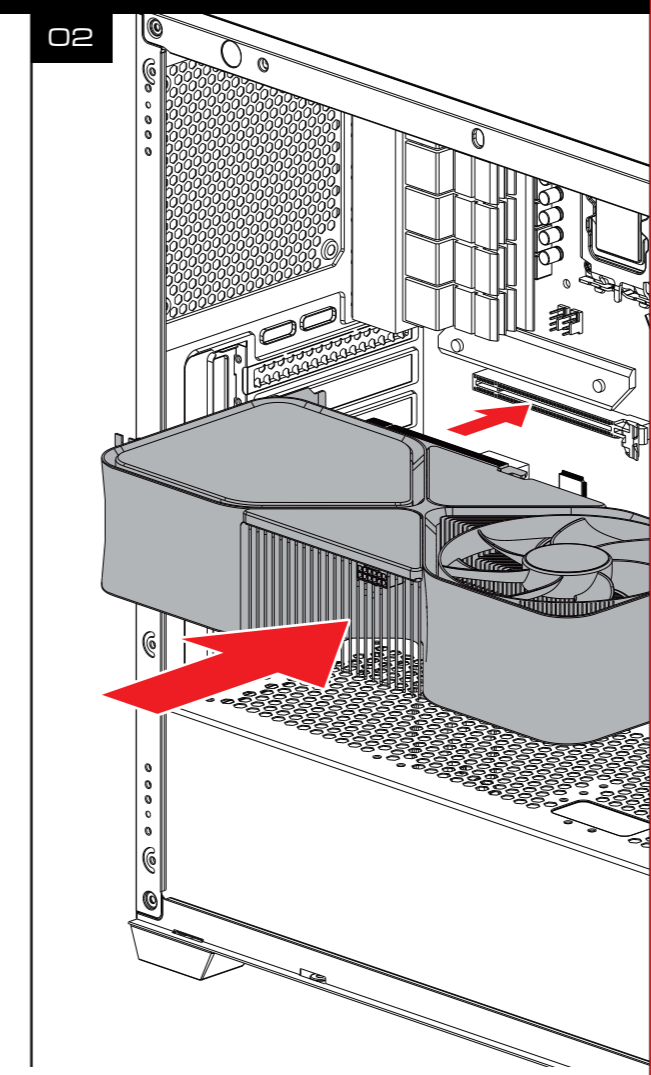
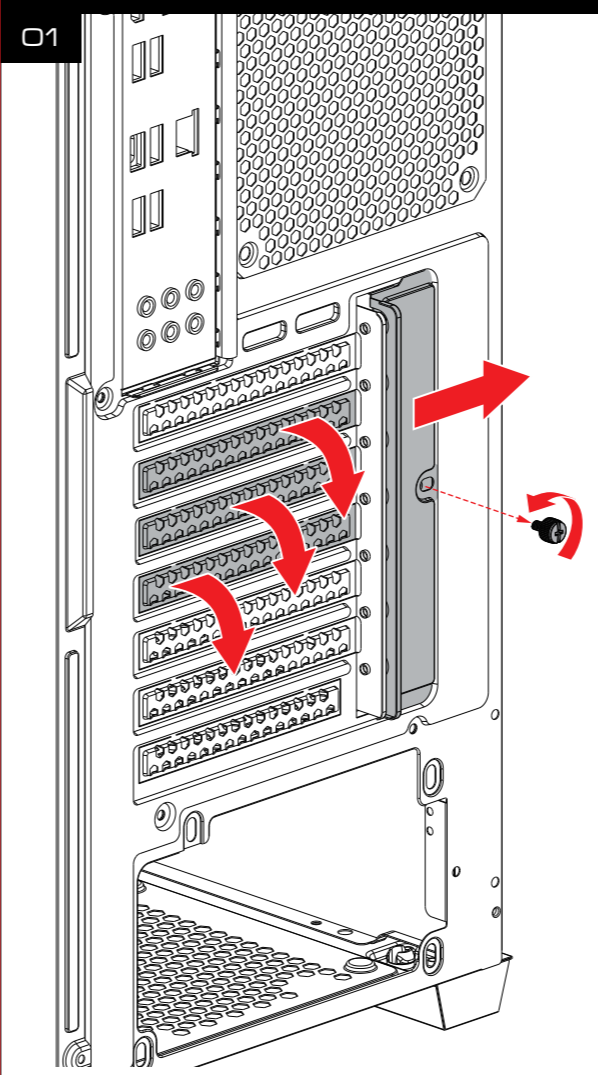


▼ Front I/O cables

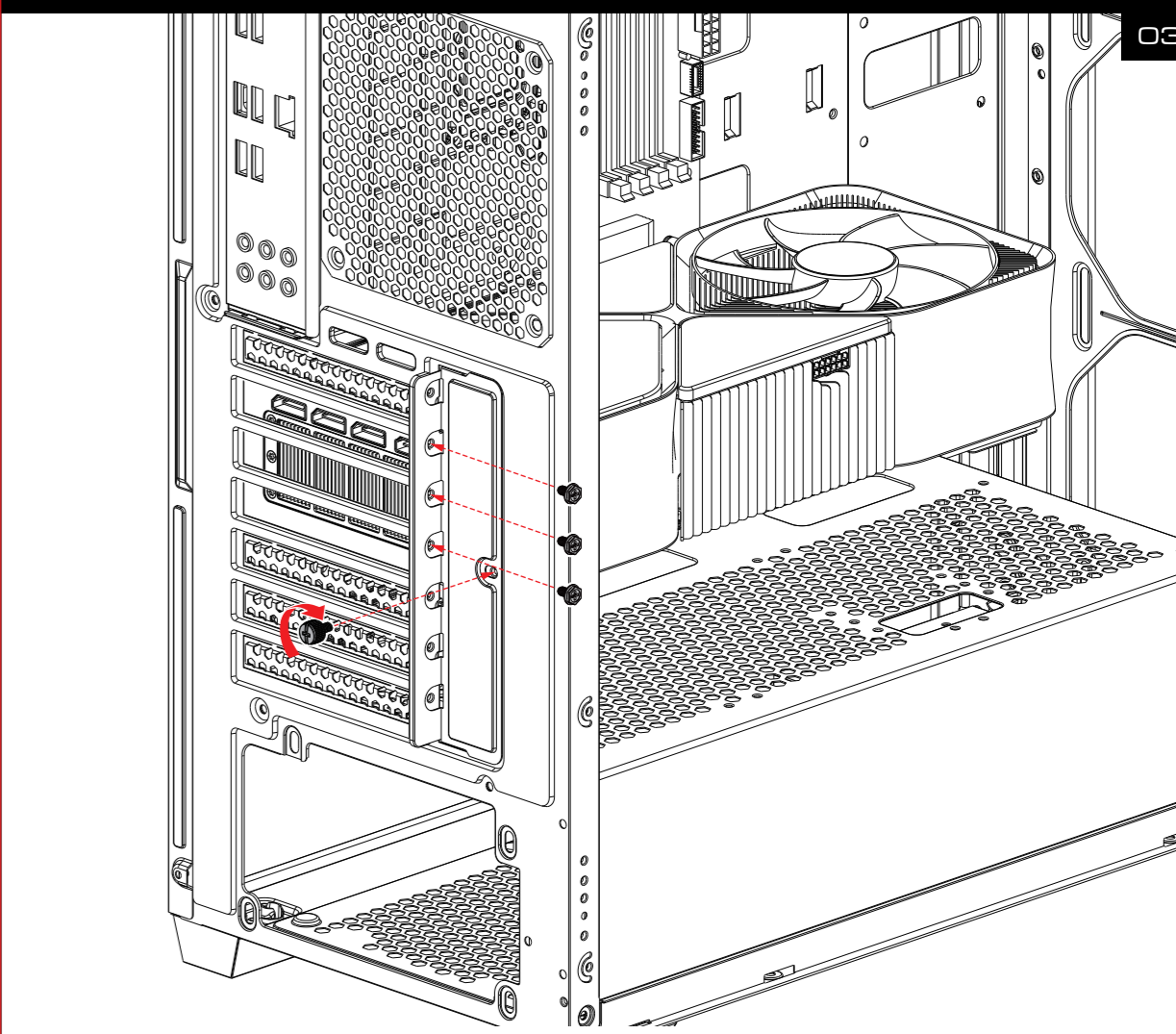


1. Lightly touch the LED button on the case to switch lighting effects.
2. Press and hold the LED button on the case to enter motherboard sync mode.
3. In motherboard sync mode, lightly touch the button to exit motherboard sync mode.

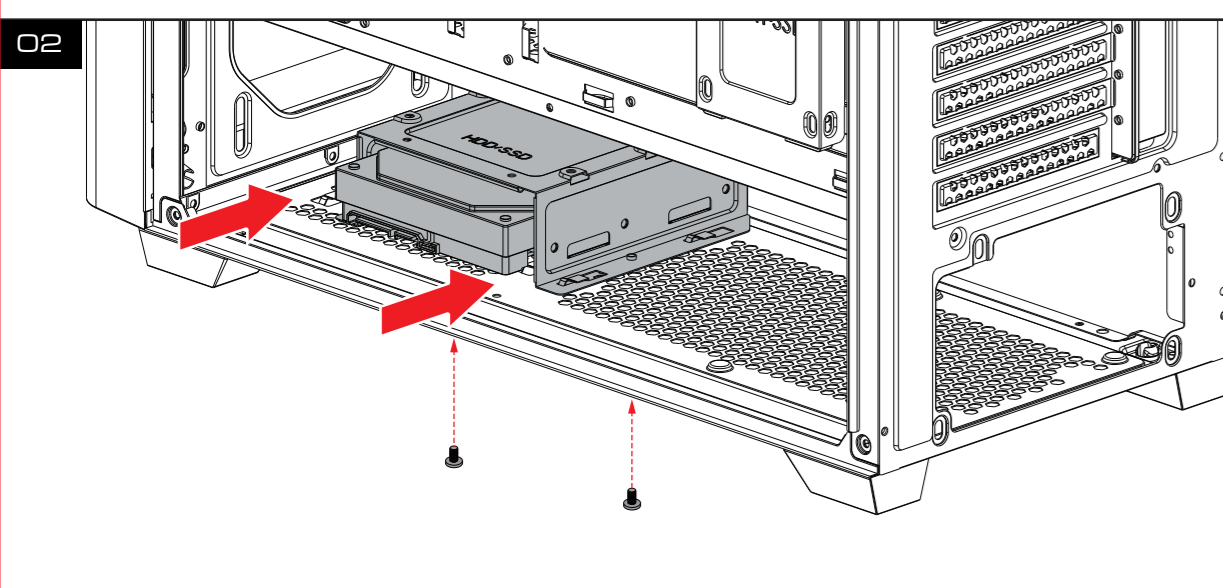
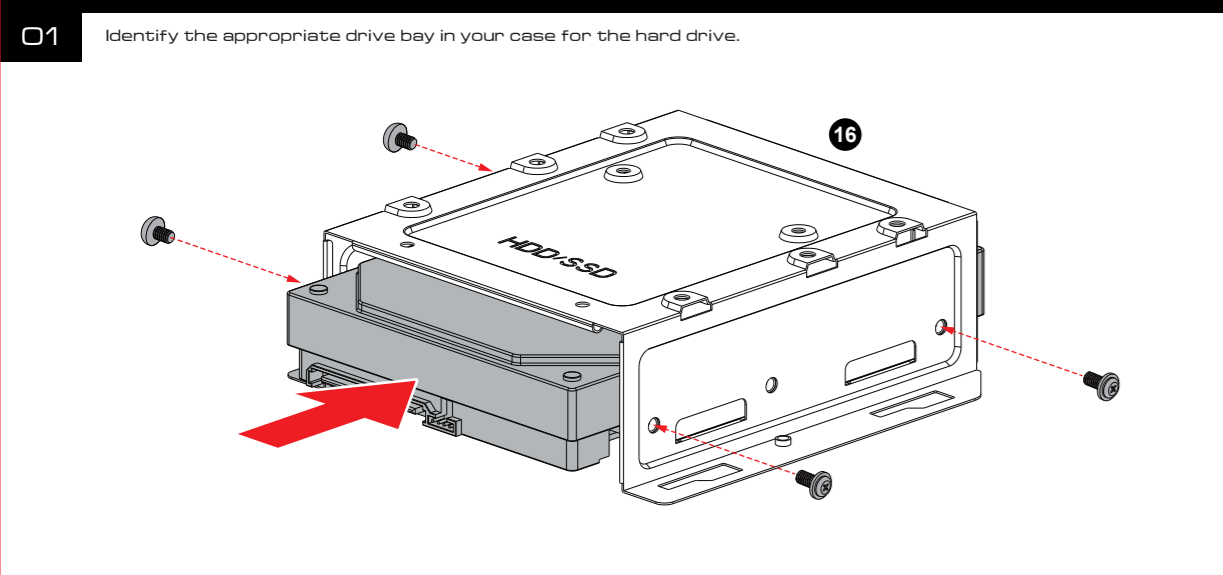
▼ GPU Installation



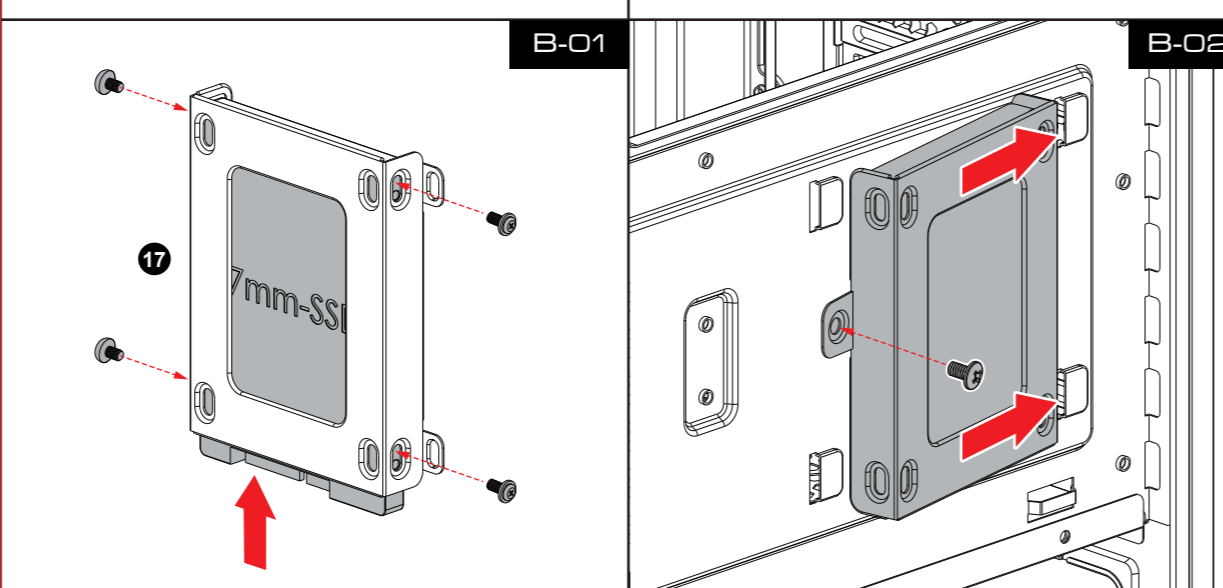
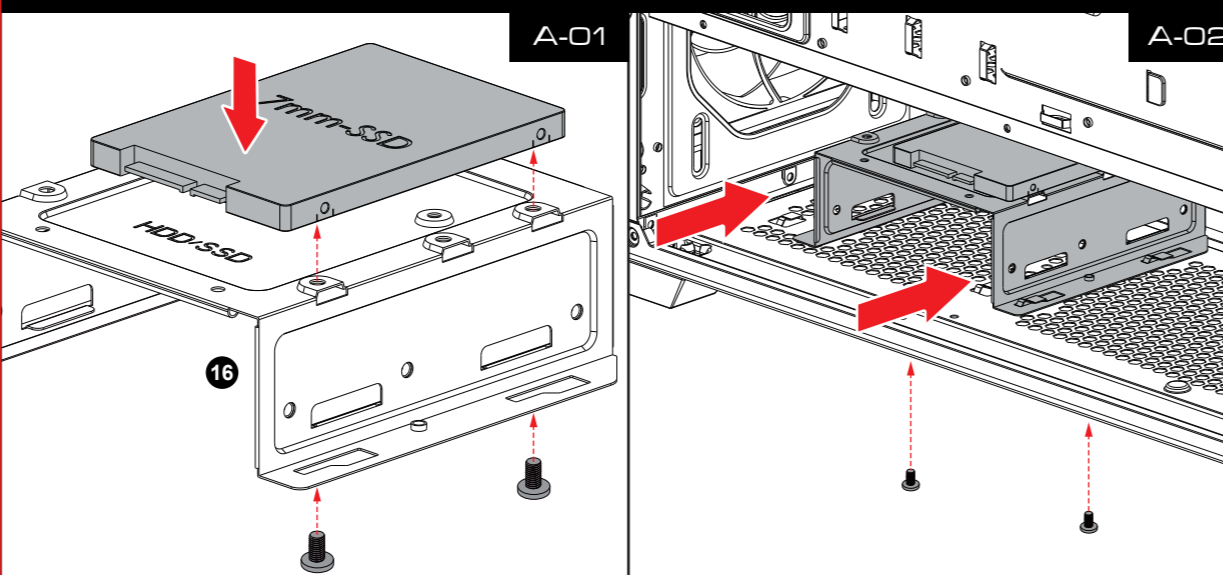
▼ GPU Installation



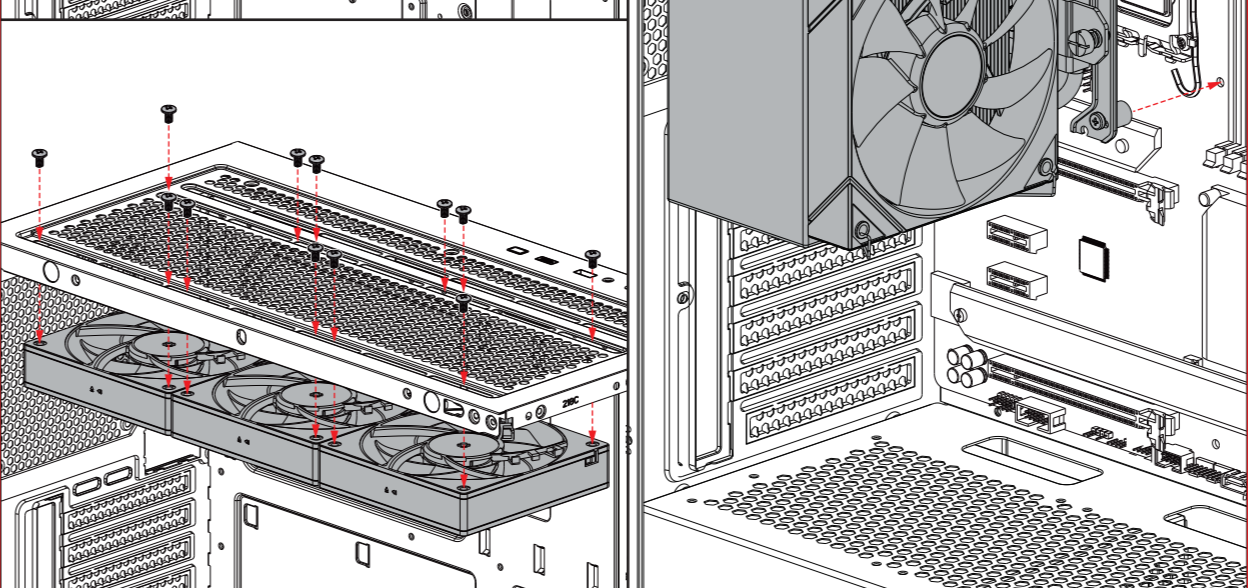
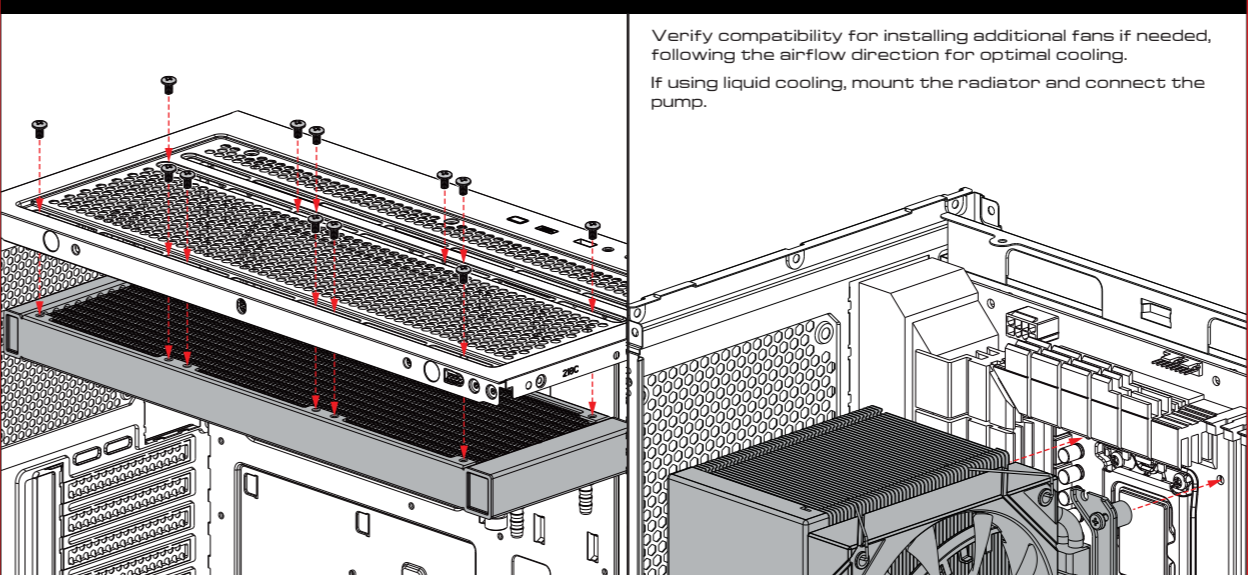
▼ HDD Installation



▼ SSD Installation



▼ Fan and Cooling System Setup



▼ Other Supports

- Troubleshooting and Maintenance**
- Regularly clean the dust filters and fans to maintain airflow.
 - Check all connections if the system is not powering on.
- Warranty and Support Information**
- Provide details on the warranty period and how to contact support for assistance